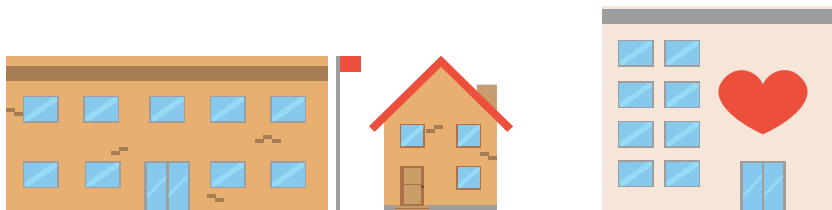




Go Outside (GO) Grants – Overview

The North Carolina Youth Outdoor Engagement Commission's objective is to encourage and strengthen young North Carolinians' connection to nature by providing opportunities to engage with the outdoors. Go Outside (GO) Grants provide funding for field trips and the construction of outdoor learning facilities.

WHO CAN APPLY?



Schools (public, private, or charter), home school associations, children's homes based in North Carolina, and 501(c)(3) organizations.

WHAT DO WE FUND?



A. Standard On-Campus Structures:

Up to \$15,000 for the construction of standard outdoor learning facilities, including outdoor classrooms, greenhouses, pollinator gardens, and vegetable gardens.

B. Advanced On-Campus Structures:

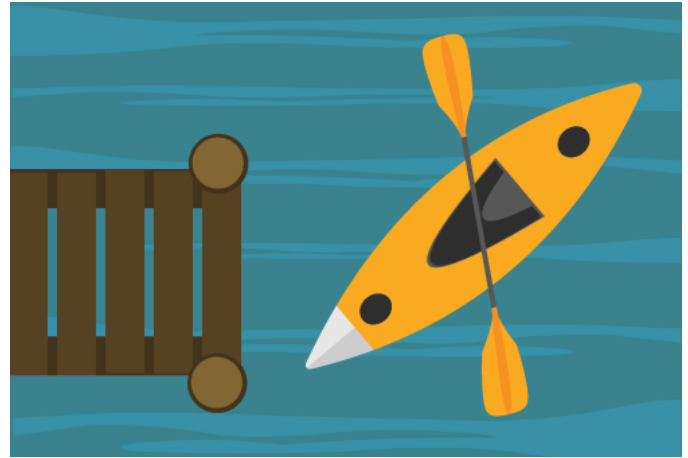
Up to \$20,000 for the construction of advanced outdoor learning facilities, including agricultural, aquatic activity, archery, and educational natural trail structures.



Agricultural structures

For example:

- Animal barns with livestock
- Mini farms
- Aquaponic/hydroponic greenhouses
- Large hoophouse greenhouses
- Agricultural equipment (tractors, etc.)



Aquatic activity structures

For example:

- Docks for fishing/kayaking
- Aquatic activity equipment (kayaks, etc.)
- Fishing equipment (fishing rods, etc.)



Archery ranges

For example:

- Outdoor archery lanes
- Bows and arrows
- Netting
- 3D targets
- Scoring equipment



Educational nature trails

For example:

- Trail construction
- Associated structures (footbridges, etc.)
- Interpretive signage



C. Field Trips:

Up to \$3,000 for single-day field trips or up to \$5,000 for overnight field trips. An extra \$1,000 is available per additional day up to the \$5,000 cap. Field trips must include an outdoor learning component/activity and may include visits to National/State Parks, city/county parks, outdoor recreation areas, outdoor activity/education centers, and historical sites.



C. Visiting Programs:

Up to \$2,500 for visiting educational programs such as museums, zoos, aquariums, beekeepers, and gardeners.

WHAT DON'T WE FUND?



Indoor field trips/visiting programs, amusement/theme parks, t-shirts, gifts/souvenirs, school beautification projects, playgrounds, lunch areas, gym/sports equipment (excluding archery equipment etc.), electronics (excluding those integral to structures or outdoor activities).

GRANT REPORTING

Once you've completed your field trip or structure, this is what we'll need to close out!

Remember: Within 30 days of your trip or structure completion date this documentation must be sent to **GoOutside.nc.gov**

1. Firstly, you'll first need to complete the **GO Grant Reporting Checklist** (available for download on the GO Grant Reporting page), this form details what documentation and information we require. With this completed form, you should send:



TWO forms proof of payment PER purchase.

For example:

- 1 x Receipt, invoice, or purchase order AND 1 x check stub or account summary.



2. Secondly, you'll need to submit photographs of your trip or structure. We love to share what our grant recipients have achieved, so please ensure they're photos we can use on our website, social media channels, and in our print materials and promotional items.



3. Funds leftover? Please return unspent funds to us by check made payable to:

N.C. Youth Outdoor Engagement Commission
1715 Mail Service Center
Raleigh, NC 27699

QUESTIONS?

See our full guidelines on the GO Grant application page "Apply for a GO Grant" at: **www.GoOutside.nc.gov**

For further questions, please email:

GoOutside.nc.gov